



US010692959B2

(12) **United States Patent**
Son

(10) **Patent No.:** **US 10,692,959 B2**
(45) **Date of Patent:** **Jun. 23, 2020**

(54) **ELECTROLUMINESCENT DISPLAY DEVICE**

(71) Applicant: **LG Display Co., Ltd.**, Seoul (KR)

(72) Inventor: **Hoon-Sok Son**, Paju-si (KR)

(73) Assignee: **LG DISPLAY CO., LTD.**, Seoul (KR)

(*) Notice: Subject to any disclaimer, the term of this patent is extended or adjusted under 35 U.S.C. 154(b) by 0 days.

(21) Appl. No.: **16/216,680**

(22) Filed: **Dec. 11, 2018**

(65) **Prior Publication Data**

US 2019/0198599 A1 Jun. 27, 2019

(30) **Foreign Application Priority Data**

Dec. 27, 2017 (KR) 10-2017-0181417

(51) **Int. Cl.**
H01L 27/32 (2006.01)
H01L 51/56 (2006.01)
H01L 51/52 (2006.01)

(52) **U.S. Cl.**
CPC **H01L 27/3276** (2013.01); **H01L 27/3251** (2013.01); **H01L 27/3279** (2013.01); **H01L 51/5237** (2013.01); **H01L 51/5246** (2013.01); **H01L 51/56** (2013.01); **H01L 2227/323** (2013.01)

(58) **Field of Classification Search**
CPC H01L 27/3276; H01L 27/3279; H01L 51/5246; H01L 27/3251; H01L 51/56; H01L 51/5237

See application file for complete search history.

(56) **References Cited**

U.S. PATENT DOCUMENTS

8,143,782 B2 3/2012 Kim
2014/0117341 A1* 5/2014 Song H01L 51/0097
257/40
2015/0070616 A1 3/2015 Ogasawara et al.
2018/0197779 A1* 7/2018 Lee H01L 27/3241

OTHER PUBLICATIONS

Non-Final Office Action, dated Mar. 30, 2020, for U.S. Appl. No. 16/216,684. (9 pages).

* cited by examiner

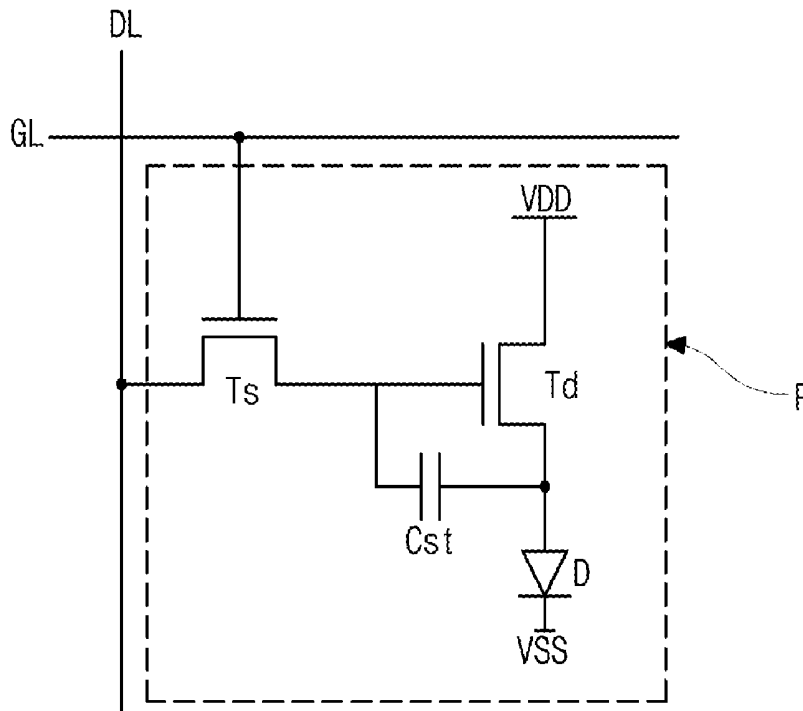
Primary Examiner — Anthony Ho

(74) Attorney, Agent, or Firm — Seed IP Law Group LLP

(57) **ABSTRACT**

An electroluminescent display device includes a substrate on which a display area and a non-display area are defined. A thin film transistor is in the display area on the substrate. A light-emitting diode is connected to the thin film transistor and includes a first electrode, a light-emitting layer and a second electrode. A first link line is disposed in the non-display area and applies a first voltage to the first electrode. A second link line is spaced apart from the first link line in the non-display area. A conductive pattern is disposed in the non-display area and is connected to the second electrode to apply a second voltage. The conductive pattern has an opening corresponding to the first link line.

16 Claims, 5 Drawing Sheets



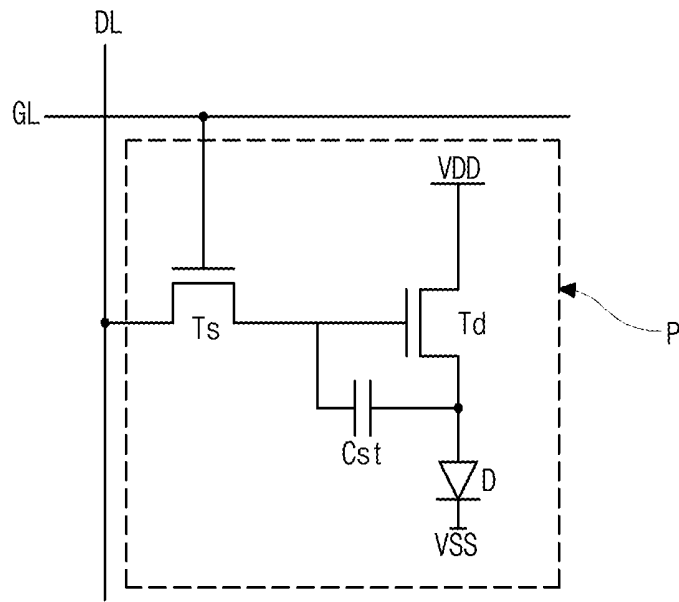


FIG. 1

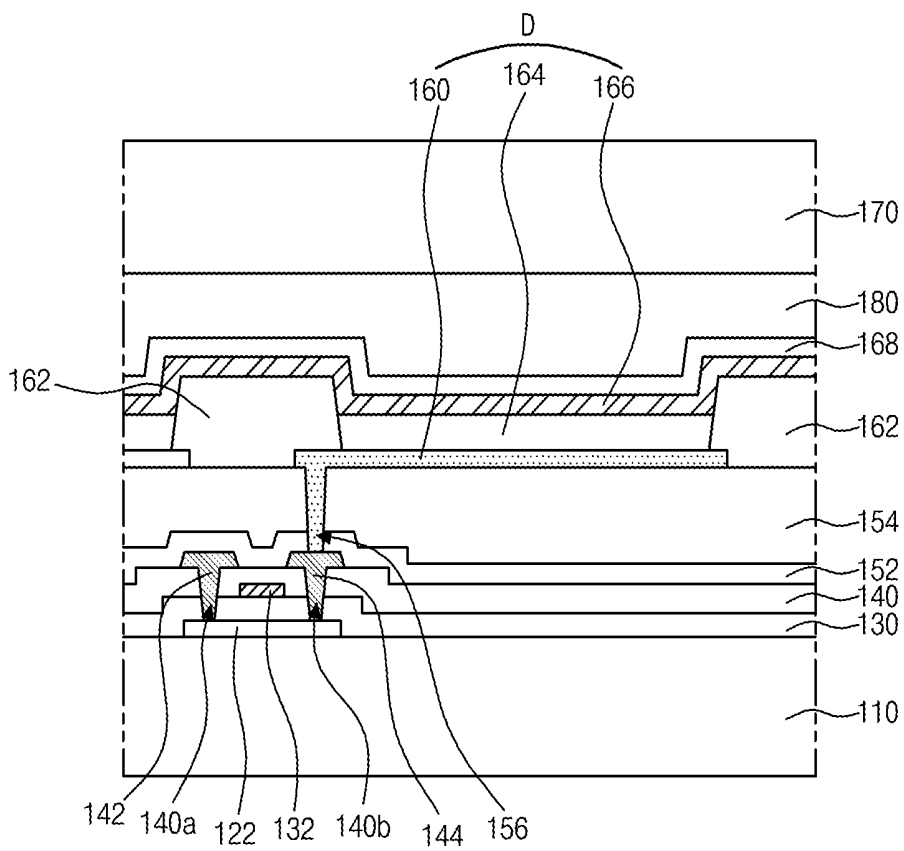


FIG. 2

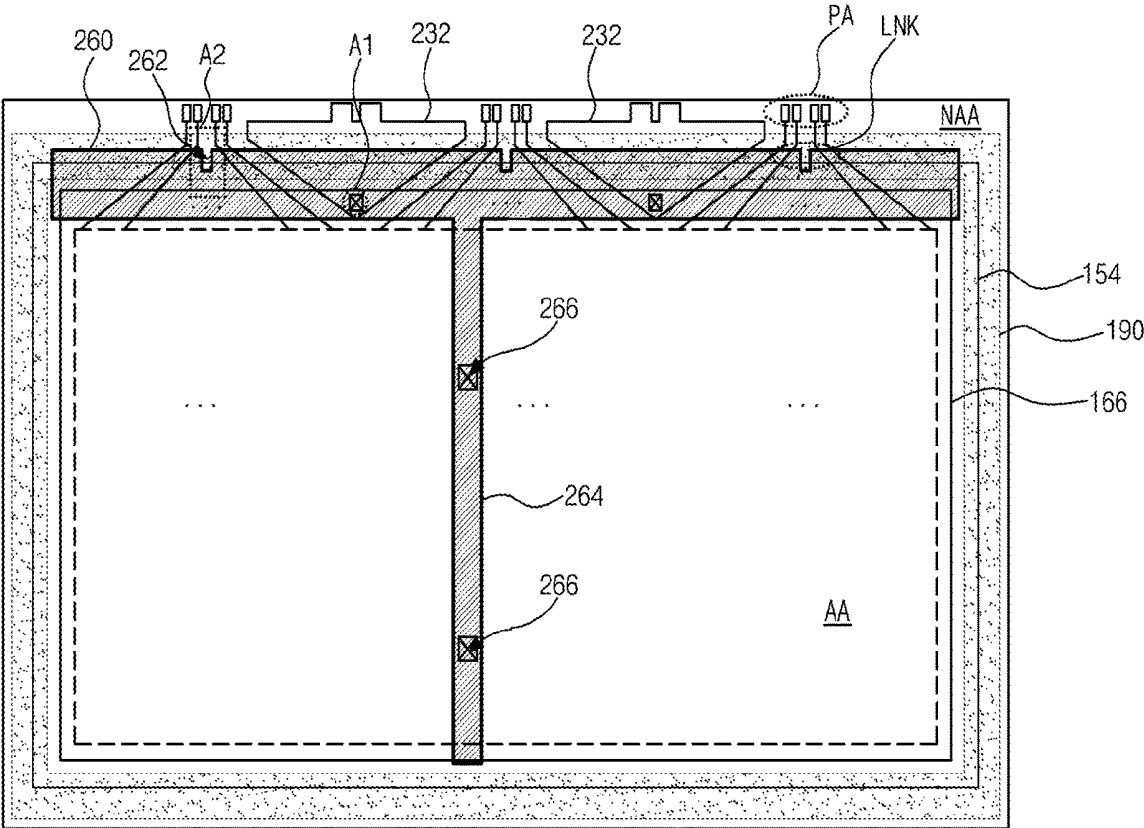


FIG. 3

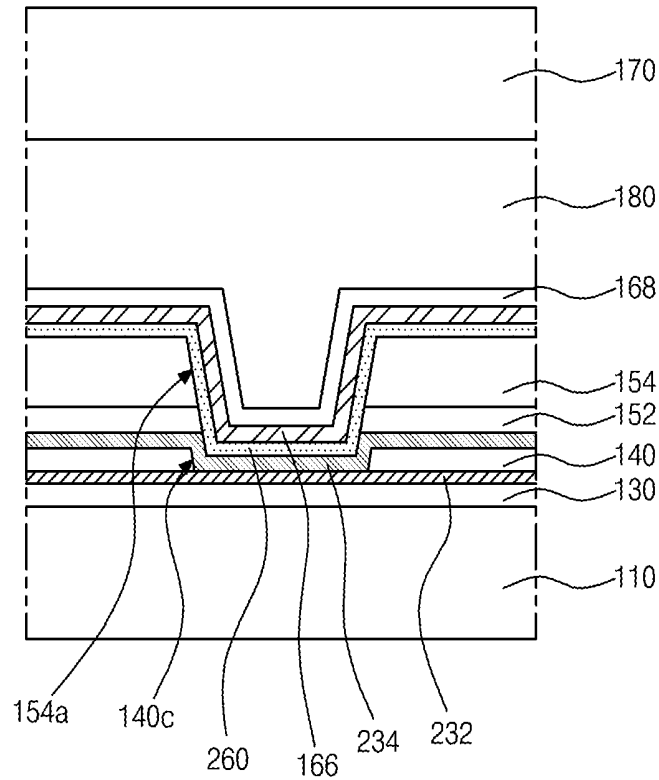


FIG. 4

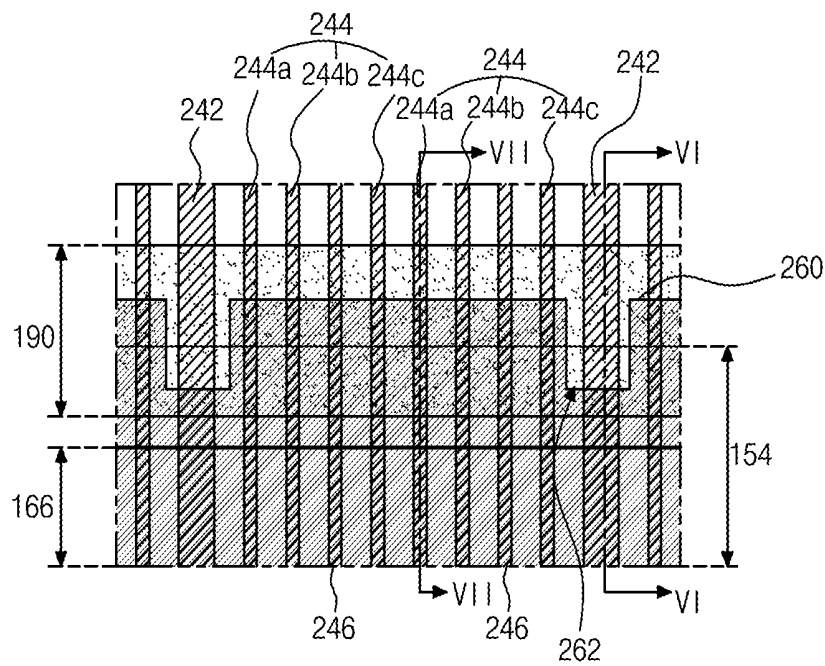


FIG. 5

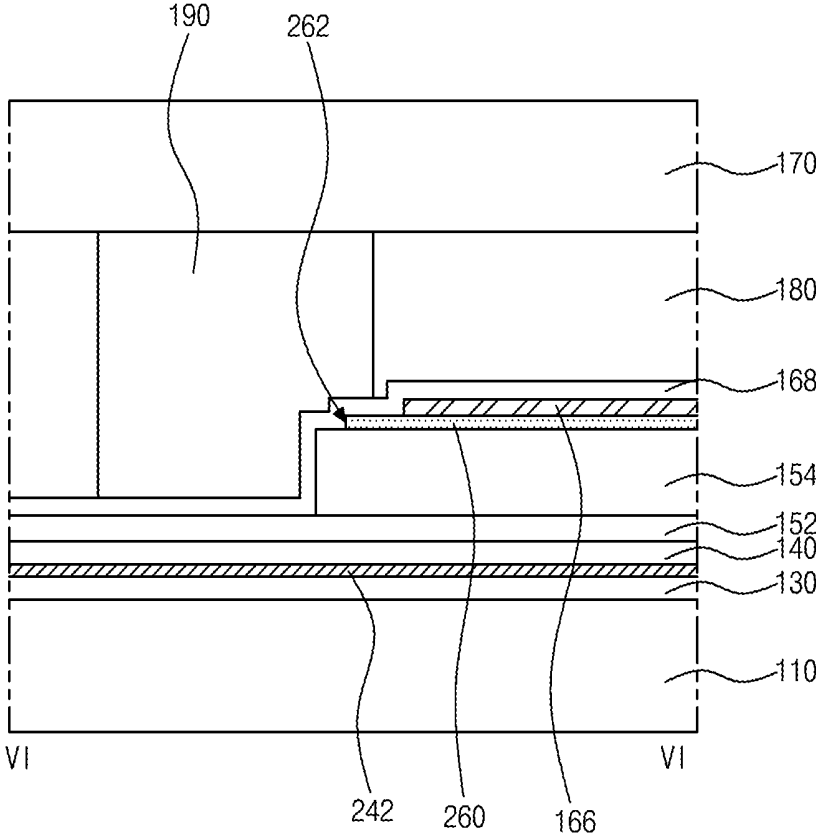


FIG. 6

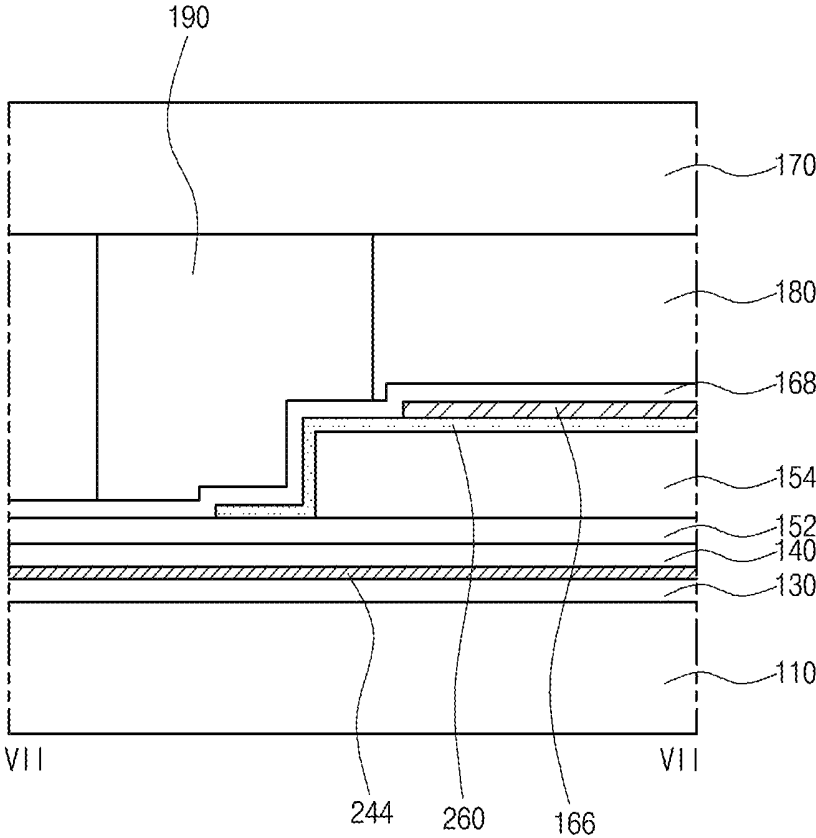


FIG. 7

ELECTROLUMINESCENT DISPLAY DEVICE**CROSS-REFERENCE TO RELATED APPLICATION**

The present application claims priority from and the benefit under 35 U.S.C § 119(a) of Korean Patent Application No. 10-2017-0181417 filed on Dec. 27, 2017, which is hereby incorporated by reference in its entirety.

BACKGROUND

Technical Field

The present disclosure relates to an electroluminescent display device, and more particularly, to an electroluminescent display device capable of preventing an electrical short between signal lines.

Description of the Related Art

Recently, flat panel displays have been widely developed and applied to various fields because of their thin profile, light weight, and low power consumption.

Among the flat panel displays, electroluminescent display devices emit light due to the radiative recombination of an exciton after forming the exciton from an electron and a hole by injecting charges into a light-emitting layer between a cathode for injecting electrons and an anode for injecting holes. The electroluminescent display devices include a flexible substrate such as plastic; because they are self-luminous, the electroluminescent display devices have excellent contrast ratios; the electroluminescent display devices have a response time of several micro seconds, and there are advantages in displaying moving images; the electroluminescent display devices have wide viewing angles and are stable under low temperatures; since the electroluminescent display devices are driven by a low voltage of direct current (DC) 5V to 15V, it is easy to design and manufacture driving circuits; and the manufacturing processes of the electroluminescent display device are simple since only deposition and encapsulation steps are required.

The electroluminescent display devices are classified into a passive matrix type and an active matrix type according to a driving method. An active matrix type electroluminescent display device has been widely used for various display devices because of its low power consumption, high definition and large size.

In an active type electroluminescent display device, a thin film transistor is formed on a substrate, a light-emitting diode is formed to be connected to the thin film transistor, and the light-emitting diode selectively emits light according to on/off of the thin film transistor.

Meanwhile, the electroluminescent display device is divided into a bottom-emission type and a top-emission type according to an output direction of light emitted from the light-emitting layer. In the bottom-emission type electroluminescent display device, light emitted from the light-emitting layer is output through a substrate on which the thin film transistor and the light-emitting diode are formed, and in the top-emission type electroluminescent display device, light emitted from the light-emitting layer is output through an opposite direction to the substrate.

Since the thin film transistor and signal lines can be formed under the light-emitting diode, the top-emission type electroluminescent display device can have a larger emis-

sion area than the bottom-emission type electroluminescent display device having the same size.

The top-emission type electroluminescent display device is formed by disposing a cover substrate over the substrate on which the thin film transistor and the light-emitting diode are formed and attaching edges of the substrate and the cover substrate using a seal pattern. Particles are generated from the seal pattern during the attaching process, and there may be a problem that an electrical short between signal lines for applying different signals is generated due to the particles.

These electrical shorts may cause ignition, and a driving failure is generated. In severe cases, the electrical short causes a fire, thereby decreasing the safety.

BRIEF SUMMARY

Accordingly, the present disclosure is directed to an electroluminescent display device that substantially obviates one or more of the problems due to limitations and disadvantages of the related art.

An embodiment of the present disclosure provides an electroluminescent display device solving the electrical short problem between signal lines thereof.

Another embodiment of the present disclosure provides an electroluminescent display device preventing ignition and improving the safety.

Additional features and advantages of the present disclosure will be set forth in the description which follows, and in part will be apparent from the description, or may be learned by practice of the present disclosure. These and other advantages of the present disclosure will be realized and attained by the structure particularly pointed out in the written description as well as the appended drawings.

To achieve these and other advantages and in accordance with the purpose of the present disclosure, as embodied and broadly described herein, there is provided an electroluminescent display device that includes a substrate on which a display area and a non-display area are defined; a thin film transistor in the display area on the substrate; a light-emitting diode connected to the thin film transistor and including a first electrode, a light-emitting layer and a second electrode; a first link line disposed in the non-display area and applying a first voltage to the first electrode; a second link line spaced apart from the first link line in the non-display area; and a conductive pattern disposed in the non-display area and connected to the second electrode to apply a second voltage, the conductive pattern having an opening corresponding to the first link line.

It is to be understood that both the foregoing general description and the following detailed description are by way of example and explanatory, and are intended to provide further explanation of the present disclosure.

BRIEF DESCRIPTION OF THE SEVERAL VIEWS OF THE DRAWINGS

The accompanying drawings, which are included to provide a further understanding of the present disclosure and which are incorporated in and constitute a part of this specification, illustrate embodiments of the present disclosure and together with the description serve to explain the principles of the present disclosure.

FIG. 1 is a circuit diagram of one pixel region of an electroluminescent display device according to an embodiment of the present disclosure;

FIG. 2 is a schematic cross-sectional view of an electroluminescent display device according to the embodiment of the present disclosure;

FIG. 3 is a schematic view of an electroluminescent display device according to the embodiment of the present disclosure;

FIG. 4 is a schematic cross-sectional view of a non-display area of an electroluminescent display device according to the embodiment of the present disclosure;

FIG. 5 is a schematic plan view of a non-display area of an electroluminescent display device according to the embodiment of the present disclosure;

FIG. 6 is a schematic cross-sectional view of a non-display area of an electroluminescent display device according to the embodiment of the present disclosure.

FIG. 7 is a schematic cross-sectional view of a non-display area of an electroluminescent display device according to the embodiment of the present disclosure.

DETAILED DESCRIPTION

Reference will now be made in detail to an embodiment of the disclosure, examples of which are illustrated in the accompanying drawings.

An electroluminescent display device according to an embodiment of the present disclosure has a display area displaying an image and a non-display area surrounding the display area, and a plurality of pixels are included in the display area. One pixel includes red, green and blue sub pixels, and a pixel region corresponding to each sub pixel can have a configuration illustrated in FIG. 1.

FIG. 1 is a circuit diagram of one pixel region of an electroluminescent display device according to an embodiment of the present disclosure.

In FIG. 1, the electroluminescent display device of the present disclosure includes a gate line GL, a data line DL, a switching thin film transistor Ts, a driving thin film transistor Td, a storage capacitor Cst and a light-emitting diode D. The gate line GL and the data line DL cross over each other to define a pixel region P. The switching thin film transistor Ts, the driving thin film transistor Td, the storage capacitor Cst and the light-emitting diode D are formed in the pixel region P.

More particularly, a gate electrode of the switching thin film transistor Ts is connected to the gate line GL and a source/drain electrode of the switching thin film transistor Ts is connected to the data line DL. A gate electrode of the driving thin film transistor Td is connected to a drain/source electrode of the switching thin film transistor Ts, and a drain electrode of the driving thin film transistor Td is connected to a high voltage supply VDD. An anode of the light-emitting diode D is connected to a source electrode of the driving thin film transistor Td, and a cathode of the light-emitting diode D is connected to a low voltage supply VSS. The storage capacitor Cst is connected to the gate electrode and the drain electrode of the driving thin film transistor Td.

The electroluminescent display device is driven to display an image. For example, when the switching thin film transistor Ts is turned on by a gate signal applied through the gate line GL, a data signal from the data line DL is applied to the gate electrode of the driving thin film transistor Td and to an electrode of the storage capacitor Cst through the switching thin film transistor Ts.

When the driving thin film transistor Td is turned on by the data signal, an electric current flowing through the light-emitting diode D is controlled, thereby displaying an image. The light-emitting diode D emits light due to the

current supplied through the driving thin film transistor Td from the high voltage supply VDD.

Namely, the amount of the current flowing through the light-emitting diode D is proportional to the magnitude of the data signal, and the intensity of light emitted by the light-emitting diode D is proportional to the amount of the current flowing through the light-emitting diode D. Thus, the pixel regions P show different gray levels depending on the magnitude of the data signal, and as a result, the electroluminescent display device displays an image.

In addition, the storage capacitor Cst maintains charges corresponding to the data signal for a frame when the switching thin film transistor Ts is turned off. Accordingly, even if the switching thin film transistor Ts is turned off, the storage capacitor Cst allows the amount of the current flowing through the light-emitting diode D to be constant and the gray level shown by the light-emitting diode D to be maintained until a next frame.

Meanwhile, a thin film transistor and a capacitor other than the switching and the driving thin film transistors Ts and Td and the storage capacitor Cst may be further added in the pixel region P.

That is, in the electroluminescent display device, the data signal is applied to the gate electrode of the driving thin film transistor Td, and the driving thin film transistor Td is turned on for a relatively long time while the light-emitting diode D emits light to display the gray level. The driving thin film transistor Td may be deteriorated due to the data signal applied for a long time. Accordingly, the mobility and/or threshold voltage Vth of the driving thin film transistor Td are changed, and the pixel region P of the electroluminescent display device displays a different gray level with respect to the same data signal. This causes non-uniform brightness, and the image quality of the electroluminescent display device is lowered.

Therefore, to compensate the change of the mobility and/or threshold voltage of the driving thin film transistor Td, at least one sensing thin film transistor and/or capacitor may be further added in each pixel region to sense the voltage change, and the sensing thin film transistor and/or capacitor may be connected to a reference line for applying a reference voltage and outputting a sensing voltage.

FIG. 2 is a schematic cross-sectional view of an electroluminescent display device according to the embodiment of the present disclosure and shows one pixel region.

In FIG. 2, a semiconductor layer 122 which is patterned is formed on a substrate 110. The substrate 110 may be a glass substrate or a plastic substrate. For example, polyimide may be used for the plastic substrate, but the present disclosure is not limited thereto.

Here, a buffer layer (not shown) may be further formed between the substrate 110 and the semiconductor layer 122.

The semiconductor layer 122 may be formed of an oxide semiconductor material, and in this case, a light-blocking layer (not shown) may be further formed under the semiconductor layer 122. The light-blocking layer blocks light incident on the semiconductor layer 122, thereby preventing the semiconductor layer 122 from being degraded due to the light. Alternatively, the semiconductor layer 122 may be formed of polycrystalline silicon, and in this case, impurities may be doped in both side portions of the semiconductor layer 122.

A gate insulating layer 130 of an insulating material is formed on the semiconductor layer 122 substantially all over the substrate 110. The gate insulating layer 130 may be formed of an inorganic insulating material such as silicon oxide (SiO₂). Alternatively, when the semiconductor layer

122 is formed of polycrystalline silicon, the gate insulation layer **130** may be formed of silicon oxide (SiO₂) or silicon nitride (SiNx).

A gate electrode **132** is formed on the gate insulating layer **130** corresponding to a central portion of the semiconductor layer **122**. The gate electrode **132** may be formed of a conductive material such as metal. In addition, a gate line (not shown) and a first capacitor electrode (not shown) may be formed on the gate insulating layer **130**. The gate line extends in a first direction, and the first capacitor electrode is connected to the gate electrode **132**.

Meanwhile, in the embodiment of the present disclosure, the gate insulating layer **130** is formed substantially all over the substrate **110**. However, the gate insulating layer **130** may be patterned to have the same shape as the gate electrode **132**.

An interlayer insulating layer **140** of an insulating material is formed on the gate electrode **132** substantially all over the substrate **110**. The interlayer insulating layer **140** may be formed of an inorganic insulating material such as silicon oxide (SiO₂) or silicon nitride (SiNx) or formed of an organic insulating material such as photo acryl or benzocyclobutene.

The interlayer insulating layer **140** has first and second semiconductor contact holes **140a** and **140b** exposing upper surfaces of both side portions of the semiconductor layer **122**. The first and second semiconductor contact holes **140a** and **140b** are disposed at both sides of the gate electrode **132** and spaced apart from the gate electrode **132**. Here, the first and second semiconductor contact holes **140a** and **140b** are also formed in the gate insulating layer **130**. Alternatively, when the gate insulating layer **130** is patterned to have the same shape as the gate electrode **132**, the first and second semiconductor contact holes **140a** and **140b** are formed only in the interlayer insulating layer **140**.

Source and drain electrodes **142** and **144** are formed of a conductive material such as metal on the interlayer insulating layer **140**. In addition, a data line (not shown), a power line (not shown) and a second capacitor electrode are formed on the interlayer insulating layer **140**. The data line extends in a second direction crossing the first direction. The power line may be parallel to the data line.

The source and drain electrodes **142** and **144** are spaced apart from each other with respect to the gate electrode **132**. The source and drain electrodes **142** and **144** directly contact the both side portions of the semiconductor layer **122** through the first and second semiconductor contact holes **140a** and **140b**, respectively. Although not shown, the data line extends in the second direction and crosses over the gate line to define each pixel region, and the power line for supplying a high potential voltage is spaced apart from the data line. The second capacitor electrode is connected to the drain electrode **144** and overlaps the first capacitor electrode. The first and second capacitor electrodes form a storage capacitor with the interlayer insulating layer **140** interposed therebetween as a dielectric.

Meanwhile, the semiconductor layer **122**, the gate electrode **132**, and the source and drain electrodes **142** and **144** constitute a thin film transistor. Here, the thin film transistor has a coplanar structure in which the gate electrode **132** and the source and drain electrodes **142** and **144** are disposed at one side of the semiconductor **122**, that is, over the semiconductor layer **122**.

Alternatively, the thin film transistor may have an inverted staggered structure in which the gate electrode is disposed under the semiconductor layer and the source and drain

electrodes are over the semiconductor layer. In this case, the semiconductor may be formed of amorphous silicon.

Here, the thin film transistor is a driving thin film transistor of the electroluminescent display device, and a switching thin film transistor (not shown) having the same structure as the driving thin film transistor is further formed in each pixel region on the substrate **110**. The gate electrode **132** of the driving thin film transistor is connected to a drain electrode (not shown) of the switching thin film transistor, and the source electrode **142** of the driving thin film transistor is connected to the power line (not shown). In addition, a gate electrode (not shown) and a source electrode (not shown) of the switching thin film transistor are connected to the gate line and the data line, respectively.

Further, a sensing thin film transistor having the same structure as the driving thin film transistor may be further formed in each pixel region.

A first insulating layer **152** and a second insulating layer **154** of an insulating material are sequentially formed on the source and drain electrodes **142** and **144** substantially all over the substrate **110**. The first insulating layer **152** may be formed of an inorganic insulating material such as silicon oxide (SiO₂) or silicon nitride (SiNx), and the second insulating layer **154** may be formed of an organic insulating material such as photo acryl or benzocyclobutene. Accordingly, the second insulating layer **154** may have a flat top surface.

The first insulating layer **152** and the second insulating layer **154** have a drain contact hole **156** exposing the drain electrode **144**. Here, the drain contact hole **156** is illustrated as being formed directly over the second semiconductor contact hole **140b**. However, the drain contact hole **156** may be formed to be spaced apart from the second semiconductor contact hole **140b**.

One of the first insulating layer **152** and the second insulating layer **154** may be omitted, and for example, the first insulating layer **152** formed of an inorganic insulating material may be omitted.

A first electrode **160** of a conductive material having relatively high work function is formed on the second insulating layer **154**. The first electrode **160** is formed in each pixel region and contacts the drain electrode **144** through the drain contact hole **156**. For example, the first electrode **160** may be formed of a transparent conductive material such as indium tin oxide (ITO) or indium zinc oxide (IZO).

The electroluminescent display device of the present disclosure may be a top-emission type, and in this case, a reflective electrode or a reflective layer of a metallic material having relatively high reflectance may be further formed under the first electrode **160**. For example, the reflective electrode or the reflective layer may be formed of aluminum-palladium-copper (APC) alloy or silver (Ag). At this time, the first electrode **160** may have a triple-layered structure of ITO/APC/ITO or ITO/Ag/ITO, but the present disclosure is not limited thereto.

A bank layer **162** of an insulating material is formed on the first electrode **160**. The bank layer **162** may be formed of an organic insulating material having a hydrophobic property. The bank layer **162** is disposed between adjacent pixel regions, and the bank layer **162** has a transmissive hole exposing the first electrode **160** and covers an edge of the first electrode **160**.

Here, the bank layer **162** is illustrated as having a single-layered structure, but the present disclosure is not limited thereto. For example, the bank layer may have a double-layered structure. That is, the bank layer may include a first

bank and a second bank on the first bank, and a width of the first bank may be wider than a width of the second bank. At this time, the first bank may be formed of an inorganic insulating material or an organic insulating material having a hydrophilic property, and the second bank may be formed of an organic insulating material having a hydrophobic property.

A light-emitting layer **164** is formed on the first electrode **160** exposed through the transmissive hole of the bank layer **162**. Although not shown, the light-emitting layer **164** may include a hole auxiliary layer, a light-emitting material layer and an electron auxiliary layer sequentially disposed on the first electrode **160**. The light-emitting material layer may be formed of an organic luminescent material such as a phosphorescent compound or a fluorescent compound or an inorganic luminescent material such as a quantum dot.

Here, the hole auxiliary layer, the light-emitting material layer and the electron auxiliary layer may be formed through a soluble process. Accordingly, the manufacturing process may be simplified, and a display device with a large size and high definition can be provided. For example, a spin coating method, an inkjet printing method or a screen printing method can be used for the soluble process.

Alternatively, the hole auxiliary layer, the light-emitting material layer and the electron auxiliary layer may be formed through a vacuum evaporation process.

In another case, the hole auxiliary layer, the light-emitting material layer and the electron auxiliary layer may be formed through a combination of the soluble process and the vacuum evaporation process.

The hole auxiliary layer may include at least one of a hole injecting layer (HIL) and a hole transporting layer (HTL), and the electron auxiliary layer may include at least one of an electron injecting layer (EIL) and an electron transporting layer (ETL).

In the drawing, the light-emitting layer **164** is illustrated as being formed only on the first electrode **160** surrounding the bank layer **162**. However, the light-emitting layer **164** may be formed substantially all over the substrate **110**. That is, the light-emitting layer **164** may also be formed on an upper surface and side surfaces of the bank layer **162**.

A second electrode **166** of a conductive material having relatively low work function is formed on the light-emitting layer **164** substantially all over the substrate **110**. Here, the second electrode **166** may be formed of aluminum (Al), magnesium (Mg), silver (Ag) or their alloy.

The first electrode **160**, the light-emitting layer **164** and the second electrode **166** constitute a light-emitting diode D. The first electrode **160** serves as an anode, and the second electrode **166** functions as a cathode.

As described above, the electroluminescent display device of the present disclosure may be a top-emission type in which light from the light-emitting layer **164** is output to the outside through the second electrode **166**, and the second electrode **166** can have a relatively thin thickness to allow light to pass therethrough. Therefore, the electroluminescent display device of the present disclosure can have a larger emission area for the same size, thereby increasing the brightness and decreasing the power consumption.

At this time, the light-emitting diode D can have an element thickness corresponding to a micro-cavity effect. Thus, the optical efficiency can be increased.

A passivation layer **168** is formed on the second electrode **166** substantially all over the substrate **110**. The passivation layer **168** may be formed of an inorganic insulating material such as silicon oxide (SiO₂) or silicon nitride (SiN_x).

Meanwhile, a cover substrate **170** is disposed over and spaced apart from the substrate **110** on which the passivation layer **168** is formed. The cover substrate **170** may be a glass substrate or a plastic substrate. For example, polyimide may be used for the plastic substrate, but the present disclosure is not limited thereto.

A filler layer **180** is disposed between the cover substrate **170** and the passivation layer **168**. The filler layer **180** may be formed of a photocurable or thermosetting material. In addition, the filler layer **180** may include a moisture absorbent and block moisture or oxygen introduced from the outside, thereby protecting the light-emitting diode D.

To apply signals to the thin film transistor and the light-emitting diode D in the pixel region, the electroluminescent display device includes a plurality of components in the non-display area, and this will be described with reference to FIG. 3.

FIG. 3 is a schematic view of an electroluminescent display device according to the embodiment of the present disclosure.

In FIG. 3, the electroluminescent display device according to the embodiment of the present disclosure includes the display area AA and the non-display area NAA which are defined on the substrate **110** of FIG. 2, and a seal pattern **190** is formed in the non-display area NAA. The seal pattern **190** surrounds the display area AA and attaches the substrate **110** of FIG. 2 and the cover substrate **170** of FIG. 2.

As described above, the plurality of pixel regions is disposed in the display area AA, and each pixel region can have the configuration shown in FIG. 1 and FIG. 2.

That is, the plurality of gate lines GL of FIG. 1 and the plurality of data lines DL of FIG. 1 cross over each other to define the plurality of pixel regions P of FIG. 1, and the thin film transistors Ts and Td of FIG. 1, the capacitor Cst of FIG. 1 and the light-emitting diode D of FIG. 2 are disposed in each pixel region P of FIG. 1. At this time, as shown, the second electrode **166** of the light-emitting diode D of FIG. 2 is formed substantially all over the display area AA and extends into the non-display area NAA to be spaced apart from the seal pattern **190**.

Further, the power line (not shown), which is connected to the source electrode **142** of FIG. 2 of the driving thin film transistor Td of FIG. 1 and supplies the high potential voltage VDD to the first electrode **160** of FIG. 2 of the light-emitting diode D of FIG. 2, is further formed in the display area AA. The power line may be parallel to the data line DL of FIG. 1.

In addition, the sensing thin film transistor (not shown) may be further formed in each pixel region P of FIG. 1 of the display area AA, and a reference line (not shown), which applies a reference voltage to the sensing thin film transistor and outputs a sensing voltage, may be further formed to be parallel with the data line DL of FIG. 1.

In the meantime, the second insulating layer **154**, which covers the thin film transistors Ts and Td of FIG. 1 and is formed of an inorganic insulating material, is disposed substantially all over the display area AA and extends into the non-display area NAA to overlap the seal pattern **190**. At this time, the seal pattern **190** covers an edge of the second insulating layer **154**.

Since the second insulating layer **154** has relatively high moisture permeability, moisture can easily permeate through the second insulating layer **154** when the second insulating layer **154** is exposed to the outside. Thus, the edge of the second insulating layer **154** is covered with the seal pattern **190** to prevent moisture from permeating. At this time, the edge of the second insulating layer **154**, preferably, is spaced

apart from an outer surface of seal pattern 190 with a predetermined distance therebetween. Accordingly, it is beneficial that a distance between the outer surface of the seal pattern 190 and the edge of the second insulating layer 154 is greater than a distance between an inner surface of the seal pattern 190 and the edge of the second insulating layer 154.

In the non-display area NAA corresponding to one side of the display area AA, a pad portion PA and a link portion LNK are provided to apply signals to the lines of the display area AA. The pad portion PA is connected to an external driving circuit (not shown), and the link portion LNK connects the pad portion PA to the lines of the display area AA. At this time, each of the pad portion PA and the link portion LNK is divided into a plurality of groups, and each group can be connected to one driving circuit.

Here, the link portion LNK can include a first link line and a second link line. The first link line is connected to the power line of the display area AA so that the high potential voltage VDD applied from the driving circuit through the pad portion PA is supplied to the first electrode 160 of FIG. 2 of the light-emitting diode D of FIG. 2. On the other hand, the second link line is connected to the data line DL of FIG. 1 of the display area AA so that a data signal applied from the driving circuit through the pad portion PA is supplied to the switching thin film transistor Ts of FIG. 1. Further, the link portion LNK may further include a link line for applying another signal, and the structure of the link portion LNK will be described in detail later.

Meanwhile, a first pattern 232 is disposed between two groups of the link portion LNK in the non-display area NAA in order to apply a low potential voltage VSS to the second electrode 166 of the light-emitting diode D of FIG. 2. The first pattern 232 may have a width that narrows from the non-display area NAA toward the display area AA. On the other hand, the link portion LNK has a width that increases from the non-display area NAA toward the display area AA. That is, a distance between adjacent link lines increases from the non-display area NAA toward the display area AA.

The link portion LNK and the first pattern 232 may be formed of the same material and on the same layer. For example, the link portion LNK and the first pattern 232 may be formed of the same material and on the same layer as the gate electrode 132 of FIG. 2, but the present disclosure is not limited thereto.

In addition, a conductive pattern 260, which overlaps the link portion LNK and the first pattern 232, is formed in the non-display area NAA. The conductive pattern 260 may be formed of the same material and on the same layer as the first electrode 160 of FIG. 2 of the light-emitting diode D of FIG. 2.

The conductive pattern 260 of the present disclosure overlaps and contacts the second electrode 166 which extends into the non-display area NAA and is connected to the first pattern 232 through a contact hole. Accordingly, the low potential voltage VSS applied through the first pattern 232 is supplied to the second electrode 166 through the conductive pattern 260. The connection structure of the first pattern 232, the conductive pattern 260 and the second electrode 166 will be described in detail later.

The conductive pattern 260 covers the edge of the second insulating layer 154. As described above, since the second insulating layer 154 has relatively high moisture permeability, the conductive pattern 260 covers the edge of the second insulating layer 154 so that moisture is prevented from permeating. Namely, the conductive pattern 260 may cover an upper surface and a side surface of the second insulating layer 154.

In the meantime, the conductive pattern 260 of the present disclosure has at least one opening 262 corresponding to the link portion LNK. Therefore, the edge of the second insulating layer 154 corresponding to the link portion LNK is partially exposed through the opening 262 of the conductive pattern 260. The opening 262 of the conductive pattern 260 will be described in detail later.

Meanwhile, in the display area AA, at least one auxiliary pattern 264 may be further formed of the same material and on the same layer as the conductive pattern 260. The auxiliary pattern 264 contacts the second electrode 166 through a contact hole 266 to lower the resistance so that the low potential voltage VSS is uniformly applied across the entire display area AA. The contact hole 266 may be formed in plural at a plurality of locations, but the present disclosure is not limited thereto. The auxiliary pattern 264 and the contact hole 266 may be omitted.

As described above, in the electroluminescent display device of the present disclosure, the low potential voltage VSS is applied to the second electrode 166 of the light-emitting diode D of FIG. 2 through the first pattern 232 and the conductive pattern 260, and the connection structure for this will be described with reference to FIG. 4.

FIG. 4 is a schematic cross-sectional view of a non-display area of an electroluminescent display device according to the embodiment of the present disclosure and shows a cross-section corresponding to the area A1 of FIG. 3.

In FIG. 4, the gate insulating layer 130 is formed on the substrate 110, and the first pattern 232 is formed on the gate insulating layer 130. The first pattern 232 may be formed of the same material and through the same process as the gate electrode 132 of FIG. 2.

The interlayer insulating layer 140 is formed on the first pattern 232, and the interlayer insulating layer 140 has a first contact hole 140c exposing the first pattern 232.

A second pattern 234 is formed on the interlayer insulating layer 140. The second pattern 234 may be formed of the same material and through the same process as the source and drain electrodes 142 and 144 of FIG. 2. The second pattern 234 contacts the first pattern 232 through the first contact hole 140c.

The first insulating layer 152 of an inorganic insulating material and the second insulating layer 154 of an organic insulating material are sequentially formed on the second pattern 234. The first insulating layer 152 and the second insulating layer 154 have a second contact hole 154a exposing the second pattern 234. At this time, the second contact hole 154a may be formed to correspond to the first contact hole 140c.

Next, the conductive pattern 260 is formed on the second insulating layer 154. The conductive pattern 260 contacts the second pattern 234 through the second contact hole 154a. The conductive pattern 260 may be formed of the same material and through the same process as the first electrode 160 of FIG. 2 of the light-emitting diode D of FIG. 2.

Meanwhile, the second pattern 234 is to lower the step difference for the contact between the conductive pattern 260 and the first pattern 232, and the second pattern 234 may be omitted. In this case, the second contact hole 154a may expose the first pattern 232 with the first contact hole 140c, and the conductive pattern 260 may contact the first pattern 232 through the first and second contact holes 140c and 154a.

In the present disclosure, the first and second contact holes 140c and 154a are illustrated as being one, but the number of the first and second contact holes 140c and 154a

is not limited thereto. The first and second contact holes **140c** and **154a** may be configured to be in plural.

Next, the second electrode **166** is formed on the conductive pattern **260**, and the second electrode **166** overlaps and contacts the conductive pattern **260**.

Further, the passivation layer **168** is formed on the second electrode **166**, the cover substrate **170** is disposed over the passivation layer **168**, and the filler layer **180** is disposed between the passivation layer **168** and the cover substrate **170**.

As described above, in the electroluminescent display device according to embodiments of the present disclosure, the second electrode **166** of the light-emitting diode **D** of FIG. **2** is directly or indirectly connected to first pattern **232**, the second pattern **234** and the conductive pattern **260** to receive the low potential voltage **VSS**.

At this time, since the conductive pattern **260**, which overlaps the link portion **LNK**, has the at least one opening **262**, it is possible to prevent the electrical short between the conductive pattern **260** and the link line of the link portion **LNK**. This will be described with reference to FIG. **5**, FIG. **6** and FIG. **7**.

FIG. **5** is a schematic plan view of a non-display area of an electroluminescent display device according to the embodiment of the present disclosure, and FIG. **6** and FIG. **7** are schematic cross-sectional views of a non-display area of an electroluminescent display device according to the embodiment of the present disclosure. FIG. **5** shows a plane corresponding to the area **A2** of FIG. **3**, FIG. **6** shows a cross-section corresponding to the line **VI-VI** of FIG. **5**, and FIG. **7** shows a cross-section corresponding to the line **VII-VII** of FIG. **5**.

As shown in FIG. **5**, FIG. **6** and FIG. **7**, the gate insulating layer **130** is formed on the substrate **110**, and first, second and third link lines **242**, **244** and **246** are formed on the gate insulating layer **130**. The first, second and third link lines **242**, **244** and **246** may be formed of the same material and through the same process as the gate electrode **132** of FIG. **2**.

The first link line **242** is connected to the power line of the display area **AA** of FIG. **3** so that the high potential voltage **VDD** applied from the driving circuit through the pad portion **PA** of FIG. **3** is supplied to the first electrode **160** of FIG. **2** of the light-emitting diode **D** of FIG. **2**.

The second link line **244** is connected to the data line **DL** of FIG. **1** of the display area **AA** so that the data signal applied from the driving circuit through the pad portion **PA** is supplied to the switching thin film transistor **Ts** of FIG. **1**. The second link line **244** may include first, second and third data links **244a**, **244b** and **244c** connected to the data lines of red, green and blue sub pixels, respectively.

The third link line **246** is connected to the reference line (not shown) of the display area **AA** to apply the reference voltage and output the sensing voltage.

Here, the first link line **242** provides a higher potential voltage than the second and third link lines **244** and **246**, and the first link line **242** may have a wider width than the second and third link lines **244** and **246**.

A plurality of second link lines **244** and a plurality of third link lines **246** may be disposed between adjacent first link lines **242**. For example, two second link lines **244** and two third link lines **246** may be disposed between the adjacent first link lines **242**. At this time, the first data link **244a**, the second data link **244b**, the third link line **246** and the third data link **244c** may be sequentially and repeatedly arranged, but the present disclosure is not limited thereto.

Next, the interlayer insulating layer **140** is formed on the first, second and third link lines **242**, **244** and **246**, and the first insulating layer **152** and the second insulating layer **154** are sequentially formed on the interlayer insulating layer **140**.

At this time, the second insulating layer **154** exposes an upper surface of the first insulating layer **152** disposed over one ends of the first, second and third link lines **242**, **244** and **246**. That is, an edge of the second insulating layer **154** is disposed on the first insulating layer **152** over the first, second and third link lines **242**, **244** and **246**.

Next, the conductive pattern **260** is formed on the second insulating layer **154**. The conductive pattern **260** partially overlaps the first, second and third link lines **242**, **244** and **246**.

The conductive pattern **260** has the opening **262** corresponding to the first link line **242**, and the edge of the second insulating layer **154** corresponding to the first link line **242** is exposed through the opening **262** of the conductive pattern **260**. At this time, the conductive pattern **260** covers the edge of the second insulating layer **154** corresponding to the second and third link lines **244** and **246**. That is, the conductive pattern **260** covers an upper surface and a side surface of the second insulating layer **154** disposed over the second and third link lines **244** and **246**.

Here, a width of the opening **262**, beneficially, is wider than the width of the first link line **242**.

Meanwhile, a portion of the conductive pattern **260** overlapping the first link line **242** has a shorter length than a portion of the conductive pattern **260** overlapping the second and third link lines **244** and **246**.

Next, the second electrode **166** is formed on the conductive pattern **260**. The second electrode **166** overlaps and contacts the conductive pattern **260**. Here, an edge of the second electrode **166** is disposed on the second insulating layer **154** and the conductive pattern **260**.

Then, the passivation layer **168** is formed on the second electrode **166**, and the cover substrate **170** is disposed over the passivation layer **168**. The seal pattern **190** and the filler layer **180** are formed between the passivation layer **168** and the cover substrate **170**, and the seal pattern **190** surrounds the filler layer **180**.

Here, the seal pattern **190** overlaps the first, second and third link lines **242**, **244** and **246** and also overlaps the edges of the second insulating layer **154** and the conductive pattern **260**. In addition, the seal pattern **190** is spaced apart from the edge of the second electrode **166**.

As described above, in the electroluminescent display device according to embodiments of the present disclosure, the conductive pattern **260** connected to the second electrode **166** has the opening **262** corresponding to the first link line **242**. The edge of the second insulating layer **154** corresponding to the first link line **242** is exposed through the opening **262**, and the edge of the conductive pattern **260** corresponding to the opening **262** is disposed on the second insulating layer **154**. Thus, since a distance between the conductive pattern **260** and the first link line **242** increases as compared with a case without the opening **262**, it is possible to prevent an electrical short between the conductive pattern **260** and the first link line **242** even if particles are generated due to the seal pattern **190**. Therefore, ignition can be prevented, and the safety can be improved.

Further, since the conductive pattern **260** of the present disclosure has the opening **262** only corresponding to the first link line **242**, a decrease in a size of the conductive pattern **260** is reduced, and resistance of the conductive pattern **260** is either unchanged or is also reduced. There-

fore, the signal can be uniformly applied across the entire display area. At this time, the second link line 244 or the third link line 246 is applied with the lower voltage than the first link line 242, and thus ignition does not occur even if the electrical short is generated between the conductive pattern 260 and the second or third link line 244 or 246. The driving failure can be solved by adjusting the applied signal.

In the present disclosure, since the electroluminescent display device is a top-emission type, the electroluminescent display device has a wider emission area than a display device having the same size. Accordingly, the brightness can be improved, and the power consumption can be lowered.

Additionally, in the electroluminescent display device of the present disclosure, it is possible to prevent an electrical short between the link line connected to the first electrode of the light-emitting diode and the conductive pattern connected to the second electrode of the light-emitting diode.

Therefore, ignition can be prevented, and the safety can be improved.

Further, the change of resistance of the conductive pattern is reduced, so that the signal is uniformly applied across the entire display area. Namely, the amount that the resistance would be increased is kept to a low value.

It will be apparent to those skilled in the art that various modifications and variations can be made in a display device of the present disclosure without departing from the spirit or scope of the embodiments. Thus, it is intended that the present disclosure covers modifications and variations of the embodiments described herein.

The various embodiments described above can be combined to provide further embodiments. These and other changes can be made to the embodiments in light of the above-detailed description. In general, in the following claims, the terms used should not be construed to limit the claims to the specific embodiments disclosed in the specification and the claims, but should be construed to include all possible embodiments along with the full scope of equivalents to which such claims are entitled. Accordingly, the claims are not limited by the disclosure.

The invention claimed is:

1. An electroluminescent display device, comprising:
 - a substrate on which a display area and a non-display area are defined;
 - a thin film transistor in the display area on the substrate;
 - a light-emitting diode connected to the thin film transistor and including a first electrode, a light-emitting layer and a second electrode;
 - a first link line disposed in the non-display area and configured to apply a first voltage to the first electrode;
 - a second link line spaced apart from the first link line in the non-display area; and
 - a conductive pattern disposed in the non-display area and connected to the second electrode to apply a second voltage, the conductive pattern having an opening corresponding to the first link line.
2. The electroluminescent display device of claim 1, wherein a portion of the conductive pattern overlapping the first link line has a shorter length than a portion of the conductive pattern overlapping the second link line.
3. The electroluminescent display device of claim 1, wherein the conductive pattern is formed of a same material and on a same layer as the first electrode.
4. The electroluminescent display device of claim 1, further comprising an organic insulating layer between the first and second link lines and the conductive pattern, wherein the conductive pattern covers portions of an edge of

the organic insulating layer and the edge of the organic insulating layer is exposed through the opening.

5. The electroluminescent display device of claim 4, further comprising:

- a cover substrate disposed over and spaced apart from the substrate; and
- a seal pattern between the substrate and the cover substrate in the non-display area, wherein the seal pattern overlaps the edge of the organic insulating layer.

6. The electroluminescent display device of claim 1, further comprising a gate line and a data line electrically connected to the thin film transistor in the display area, wherein the second data link line is connected to the data line.

7. The electroluminescent display device of claim 1, further comprising a first pattern overlapping the conductive pattern and electrically connected to the conductive pattern in the non-display area, wherein the first pattern is formed of a same material and on a same layer as the first link line.

8. The electroluminescent display device of claim 7, wherein the first pattern has a width that decreases from the non-display area toward the display area.

9. The electroluminescent display device of claim 7, wherein the first pattern and the first link line are formed of a same material and on a same layer as a gate electrode of the thin film transistor.

10. The electroluminescent display device of claim 9, further comprising a second pattern disposed between the conductive pattern and the first pattern and connected to the conductive pattern and the first pattern, wherein the second pattern is formed of a same material and on a same layer as source and drain electrodes of the thin film transistor.

11. An electroluminescent display device, comprising:

- a sub pixel in a display area of the display device, the sub pixel including a thin film transistor coupled to a light-emitting diode having a first electrode and a second electrode;
- a first link line in a non-display area of the display device, the first link line configured to provide a first voltage to the first electrode;
- a second link line spaced apart from the first link line in the non-display area, the second link line configured to provide a second voltage that is less than the first voltage; and
- a conductive pattern overlapping the first and second link lines in the non-display area, the conductive pattern configured to provide a reference voltage to the second electrode and including an opening corresponding to the first link line.

12. The electroluminescent display device of claim 11 further comprising an organic insulating layer between each of the first and second link lines and the conductive pattern, the organic insulating layer having an edge and the conductive pattern covering the edge of the organic insulating layer corresponding to the second link line.

13. The electroluminescent display device of claim 12 further comprising a seal pattern on the conductive pattern covering the edge of the organic insulating layer.

14. The electroluminescent display device of claim 11, wherein a portion of the conductive pattern overlapping the first link line has a shorter length than a portion of the conductive pattern overlapping the second link line.

15. The electroluminescent display device of claim 11, wherein the light-emitting diode further comprises an organic light emitting layer disposed between the first and second electrodes.

16. The electroluminescent display device of claim 11, wherein the display area comprises a plurality of sub pixels configured to form a top-emission type display area.

* * * * *

专利名称(译)	电致发光显示装置		
公开(公告)号	US10692959	公开(公告)日	2020-06-23
申请号	US16/216680	申请日	2018-12-11
[标]申请(专利权)人(译)	乐金显示有限公司		
申请(专利权)人(译)	LG DISPLAY CO. , LTD.		
当前申请(专利权)人(译)	LG DISPLAY CO. , LTD.		
发明人	SON, HOON-SOK		
IPC分类号	H01L27/32 H01L51/52 H01L51/56		
CPC分类号	H01L51/5237 H01L27/3279 H01L51/5246 H01L27/3276 H01L51/56 H01L27/3251 H01L2227/323		
审查员(译)	HO , ANTHONY		
优先权	1020170181417 2017-12-27 KR		
其他公开文献	US20190198599A1		
外部链接	Espacenet		

摘要(译)

电致发光显示装置包括基板，在基板上限定显示区域和非显示区域。薄膜晶体管在基板上的显示区域中。发光二极管连接到薄膜晶体管，并且包括第一电极，发光层和第二电极。第一连接线设置在非显示区域中，并将第一电压施加到第一电极。在非显示区域中，第二连接线与第一连接线间隔开。导电图案设置在非显示区域中，并且连接到第二电极以施加第二电压。导电图案具有对应于第一连接线的开口。

